

fire risk assessment

ECCLESIASTICAL RISK SERVICES LIMITED



Fire starts when your attention stops

Facing up to your responsibilities

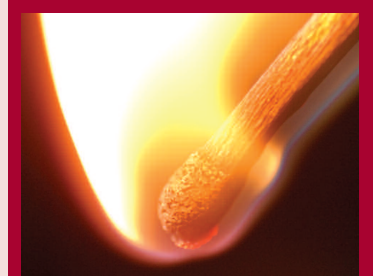
All those responsible for an organisation where five or more persons are employed, or where visitors and members of the public are on site in numbers exceeding five, are required to have a fire risk assessment carried out.

The liability for completing the assessment rests with the **responsible person**. The responsible person is defined as: the employer (for a workplace under the employer's control); a person who has control of a premises in connection with them carrying out any trade, business or other undertaking (for profit or not); or the owner.

Act now to safeguard you, your workers and your organisation.

A professional service

The legislation allows you to appoint a **competent person** to assist your organisation in managing its fire safety risks. Our consultants can take on the role of your competent person and can produce practical assessments to help you ensure compliance. Full details of the service is shown overleaf.



Failure to comply with the legislation may result in a fine of up to £10,000 or two years imprisonment.

Why choose us?

- **No fixed-term contracts** – you only pay for the services you need.
- **Flexible payment plans** – spread the cost over 12 months.
- **Discounts for Ecclesiastical policyholders.**
- **Discounts for repeat customers.**
- **Practical cost effective solutions** – bespoke to your needs.
- **Experience, knowledge and understanding of our specialist sectors.**



To find out more call
0845 602 4065

About our service

Ecclesiastical Risk Services' consultants will assess the wide range of fire risk factors that your organisation is exposed to including:

- sources of ignition
- sources of fuel
- arrangements for safe evacuation
- suitability of detection and warning systems
- risk to workers and members of the public
- adequacy of fire fighting equipment
- signage
- threat of arson

On completion of a detailed site survey we will provide you with a comprehensive yet easy to understand report on the organisation's existing fire safety arrangements. The report will also include recommendations on the actions that need to be implemented to both comply with the current safety law and improve fire safety management.

Carrying out a fire risk assessment is of real benefit to your business. By taking a few simple steps to reduce fire risks you can prevent major losses and disruption. This makes a fire assessment a sensible investment as well as a legal requirement.

Ignorance is no defence

In 2006 there were 32,900 fires recorded on buildings other than dwellings and 37 people died in fires in such premises.

64% of all school fires in 2006 were started deliberately.

77% of businesses experiencing a major fire never fully recover.

Contact us:



To find out more about how we can help with your fire safety needs, or to get a quote

call **0845 602 4065**

email ers.ltd@ecclesiastical.com

or visit www.ecclesiastical.com



Beaufort House, Brunswick Road,
Gloucester GL1 1JZ
Email ers.ltd@ecclesiastical.com
www.ecclesiastical.com

Ecclesiastical Insurance Office plc. (EIO) Reg. No. 24869. Ecclesiastical Insurance Group plc. (EIG) Reg. No. 1718196. Ecclesiastical Life Ltd. (ELL) Reg. No. 243111. Ecclesiastical Investment Management Ltd (EIM) Reg. No. 2170173. Allchurches Mortgage Company Ltd. (AMC) Reg. No. 1974218. Ecclesiastical Financial Advisory Services Ltd. (EFAS) Reg. No. 2046087. Ecclesiastical Risk Services Ltd. (ERS) Reg. No. 6290300. All companies are registered in England at Beaufort House, Brunswick Road, Gloucester, GL1 1JZ, UK. Tel: 01452 528533. EIO, ELL, EIM & EFAS are authorised and regulated by the Financial Services Authority and are members of the Financial Ombudsman Service. EIO & ELL are members of the Association of British Insurers and EIM is a member of the Investment Management Association.